

## Ammo Box

### Featured Product

Honeywell's unique Ammo Box packaging provides security professionals with an entirely new level of installation convenience and inventory control. Each Ammo Box contains an “ammo belt” of 50 individually packaged magnetic contacts complete with screws, spacers and covers. Simply tear off the perforated bag, incrementally numbered bag. The number on the next bag indicates the quantity left in the Ammo Box.

Ammo boxes not only eliminate the frustration of digging through loose parts or sorting through mismatched sets—they make purchasing contacts simple. You can select the exact amount required for an individual installation or purchase the ultra-convenient Ammo Box of 50.

→ Look for contacts featuring the “Available in Ammo Box” symbol throughout this catalog!

Available in  
Ammo Box

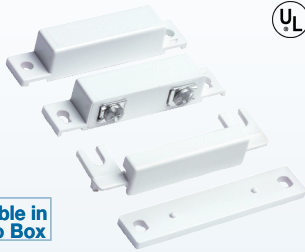


### Ammo Box Magnetic Contacts

- 50 individually packaged contacts per Ammo Box
- Perforated bags let you take only as many as needed
- Each bag contains all needed parts, including screws, spacers, etc.
- Sequential numbers on bag tell you how many are left in the box

**Honeywell**

# Surface Mount



Available in  
 Ammo Box

Available  
October  
2005

## 7939WG Magnetic Contact

- Ideal for residential or commercial use
- Standard gap: 1-1/4" (32mm)
- Spacers, covers and screws included

### ORDERING:

**7939WG-WH** – White

**7939WG-BR** – Brown

**7939WG-GY** – Grey

**7939WG-WH-M** – Extra magnet (10 pack)

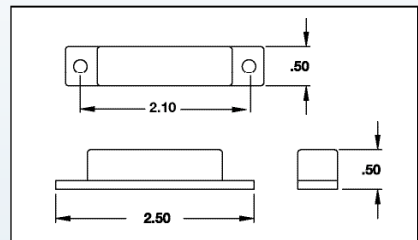
**7939WG-BR-M** – Extra magnet (10 pack)

**7939WG-GY-M** – Extra magnets (10 pack)

### SPECIFICATIONS:

**Switch Type:** Form A (SPST) Reed

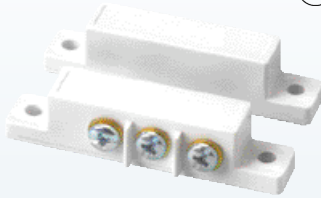
**Contact Rating:** 300ma @ 30VDC



### REPLACES:

- ADEMCO PR20439, 7939, 7939W
- Aleph DC2541, DC2541-WG
- FBII ZR735
- GRI 29A
- Intellisense MPS20
- Nascom N-85T
- Sentrol 1085T, 1285T
- Tane SM35

# Surface Mount



## **7939-2** Magnetic Contact

- SPDT (Form C) Contact
- Standard gap: 1" (25mm)
- Spaces, covers and screws included
- Cover conceals end of line resistor (EOL)

---

### ORDERING:

**7939-2WH** – White

**7939-2BR** – Brown

**7939-2GY** – Grey

**7939WH-M**– Extra magnet (10 pack)

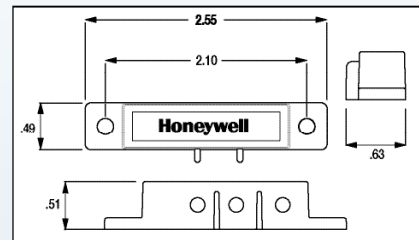
**7939BR-M**– Extra magnet (10 pack)

**7939GY-M**– Extra magnets (10 pack)

### SPECIFICATIONS:

**Switch Type:** Form C (SPDT) Reed

**Contact Rating:** 100ma @ 28VDC



### REPLACES:

- GRI 29C
- Sentrol 1087T

# Surface Mount



Available in  
Ammo Box

**7940**

## Universal Magnetic Contact

- The most versatile mounting options of any contact available – screw mount, adhesive mount or recess
- Super wide gap of 2" (51mm) is standard or 1" (25mm) end-to-end recessed
- Insulation displacement terminals eliminate stripping or soldering, just insert wires and tighten
- Recess adapter plugs included

---

### ORDERING:

**7940WH** – White

**7940BR** – Brown

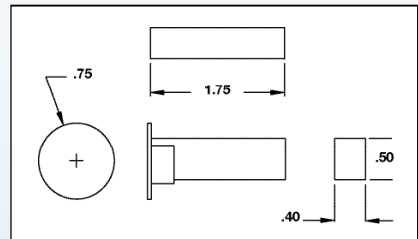
**7940WH-M** – Extra magnet (10 pack)

**7940BR-M** – Extra magnet (10 pack)

### SPECIFICATIONS:

**Switch Type:** Form A (SPST) Reed

**Contact Rating:** 100ma @ 28VDC



Patent # 5,476,397

### REPLACES:

- Amseco AMS51
- Sentrol 1038T, 1038-M, 1082TW-M, 1285TW-N
- Tane-50

# Surface Mount



Available  
October  
2005

Available in  
 Ammo Box

## 943WG

### Mini Magnetic Contact

- Standard gap: 1" (25mm)
- 12" (30cm) leads
- Self-adhesive or screw mount

---

### ORDERING:

**943WG-WH** – White

**943WG-BR** – Brown

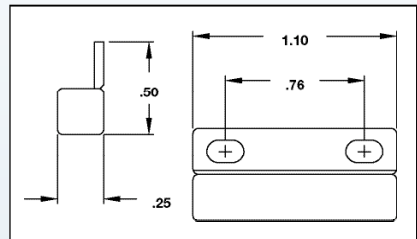
**943WG-WH-M**– Extra magnet (10 pack)

**943WG-BR-M**– Extra magnet (10 pack)

### SPECIFICATIONS:

**Switch Type:** Form A (SPST) Reed

**Contact Rating:** 300ma @ 30VDC



### REPLACES:

- ADEMCO PR20443, 943
- Aleph DC-1561, DC-1551-WG
- GRI 50F-12
- Intellisense MPS45
- Nascom N25
- Sentrol 1145, 1032, 1035

# Surface Mount



Available in  
Ammo Box

## 945T Miniature Magnetic Contact with Screw Terminals

- Screw mount or adhesive mount
- Screw terminals eliminate wire splicing and soldering
- Standard gap: 1-1/8" (29mm)

### ORDERING:

**945T-WH** – White

**945T-BR** – Brown

**945T-GY** – Grey

**945WH-M** – Extra magnet (10 pack)

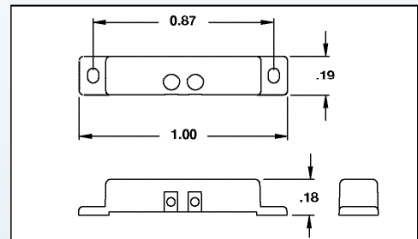
**945BR-M** – Extra magnet (10 pack)

**945G Y-M** – Extra magnet (10 pack)

### SPECIFICATIONS:

**Switch Type:** Form A (SPST) Reed

**Contact Rating:** 100ma @ 28VDC



### REPLACES:

- Aleph DC-2531-WG
- GRI 100T, 110T
- Sentrol 1038T, 1138T
- Tane-60

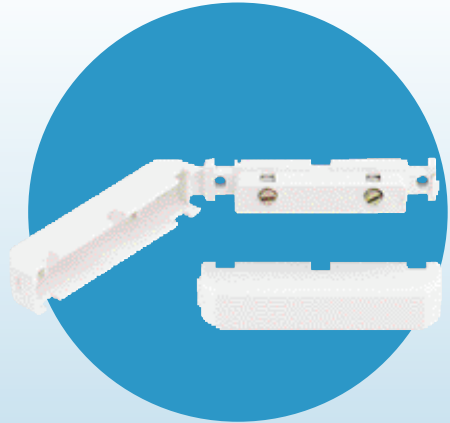
## PAL-T

### *Featured Product*

There's a reason why Honeywell's PAL-T contacts are so popular.

**Convenience.** The revolutionary, one-piece mini surface mount contact features a patented hinged cover that eliminates the hassle of loose parts. Installations are as simple as mounting, wiring, and snapping the case closed!

Despite its small size, the UL, ULC and CE listed PAL-T contact features a 1-1/8" gap—reducing false alarms while speeding up installation time.



**PAL-T**  
**Honeywell Exclusive**

**Patent # 6,135,826**

# Surface Mount



Available in  
Ammo Box

## **PAL-T** Magnetic Contact

- Patented hinged case cover—no loose parts
- Concealed screw terminals eliminate splicing and soldering
- 1-1/8" (29mm) gap makes installation a snap
- Screw mount or adhesive mount
- Six wire entry points for mounting versatility
- Conceals EOL resistor

### **ORDERING:**

**PAL-T-WH** – White

**PAL-T-BR** – Brown

**PAL-T-GY** – Grey

**PAL-WH** – With 5' leads (5 pack)

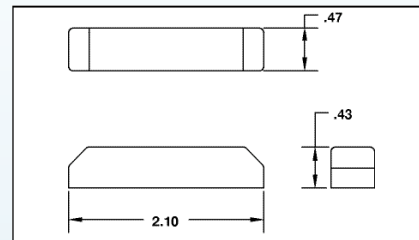
**PAL-M-WH** – Extra magnet (10 pack)

**PAL-M-BR** – Extra magnet (10 pack)

### **SPECIFICATIONS:**

**Switch Type:** Form A (SPST) Reed

**Contact Rating:** 100ma @ 28VDC



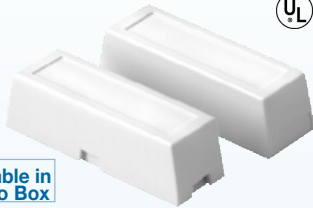
Patent # 6,135,826

### **REPLACES:**

- Aleph DC-2531
- GRI 100T, 100TC, 110T
- Sentrol 1038T
- Tane-60



# Surface Mount



Available in  
Ammo Box

## 940 Magnetic Contact

- Miniature size perfect for homes and offices
- Attractive cover keeps mounting screws and terminals screws hidden
- Standard gap: 3/4" (19mm)
- Complete with spacers and mounting screws
- Cover hides EOL resistor

---

### ORDERING:

**940WH** – White

**940BR** – Brown

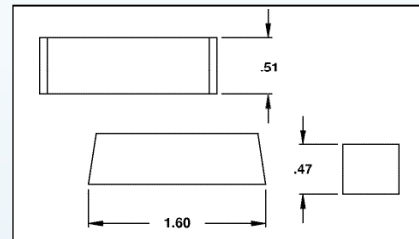
**940WH-M** – Extra magnet (10 pack)

**940BR-M** – Extra magnet (10 pack)

### SPECIFICATIONS:

**Switch Type:** Form A (SPST) Reed

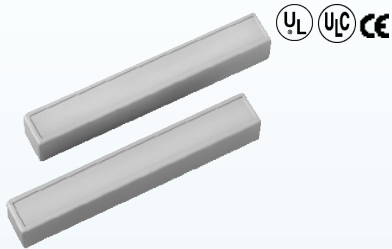
**Contact Rating:** 100ma @ 28VDC



### REPLACES:

- Aleph PS-1523
- GRI 29A, 129A
- Nascom N285T
- Sentrol 1085T, 1285T

# Surface Mount



## 950 Magnetic Contact

- Completely hides mounting screws and terminals
- Standard gap: 1-3/4" (45mm)
- Ideal for concealing end-of-line resistor (EOL)

---

### ORDERING:

**950BR** – Brown

**950GY** – Grey

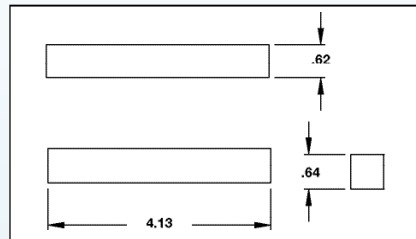
**950W-BR** – Brown: wide-gap 2-1/4"(57mm)

**950W-GY** – Grey: wide-gap 2-1/4"(57mm)

### SPECIFICATIONS:

**Switch Type:** Form A (SPST) Reed

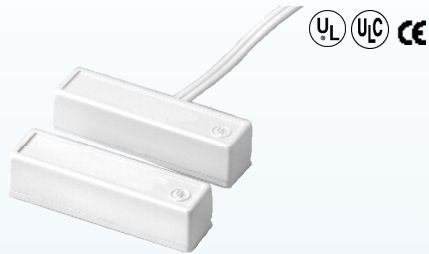
**Contact Rating:** 100ma @ 28VDC



### REPLACES:

- GRI 400
- Sentrol 1045T

# Surface Mount



**945**

## Adhesive Mount Magnetic Contact

- Adhesive mount
- Standard gap: 1-1/4" (32mm)
- External test points standard
- 15 ft. leads (4.6m)
- Package Quantity 5 per bag

---

### ORDERING:

**945WH** – White

**945BR** – Brown

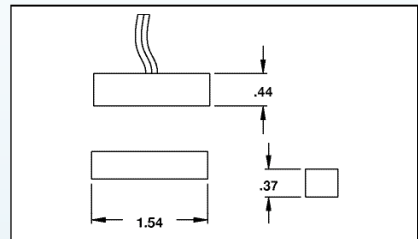
**945WH-M** – Extra magnet (10 pack)

**945BR-M** – Extra magnet (10 pack)

### SPECIFICATIONS:

**Switch Type:** Form A (SPST) Reed

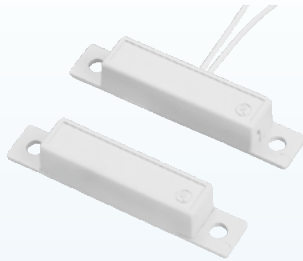
**Contact Rating:** 100ma @ 28VDC



### REPLACES:

- Aleph PS1541
- GRI 100-12, 110-12
- Nascom N35
- Sentrol 1035
- Tane FM106

# Surface Mount



## PR-20445

### Magnetic Contact with Leads

- Screw or adhesive mount
- 18" (46 cm) long wire leads
- Adhesive pads are pre-applied for fast easy installation – they do not need to be removed for screw mounting
- Standard gap: 1-1/4" (32mm)

### ORDERING:

**PR-20445WH** – White

**PR-20445BR** – Brown

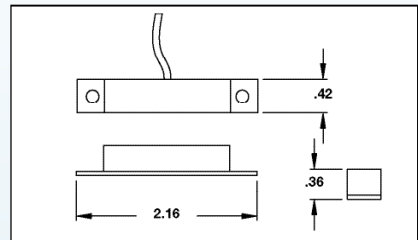
**PR-20445WH- M** – Extra magnet (10 pack)

**PR-20445BR- M** – Extra magnet (10 pack)

### SPECIFICATIONS:

**Switch Type:** Form A (SPST) Reed

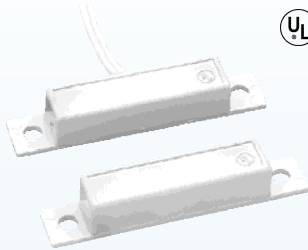
**Contact Rating:** 100ma @ 28VDC



### REPLACES:

- Aleph PS1541
- GRI 110-12
- Nascom N35
- Sentrol 1082-N, 1085
- Tane FM106

# Surface Mount



**949**

## Magnetic Contact with Leads

- Screw mount
- External test points standard
- Standard gap: 1-1/4" (32mm)
- Complete with spacers and mounting screws

---

### ORDERING:

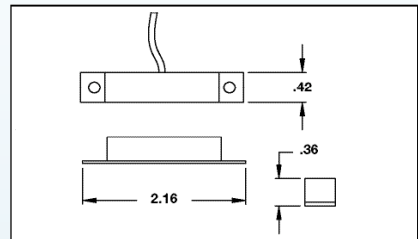
**949-WH** – White

**949-BR** – Brown

### SPECIFICATIONS:

**Switch Type:** Form A (SPST) Reed

**Contact Rating:** 100ma @ 28VDC



### REPLACES:

- Aleph PS1541
- GRI 100-12
- Nascom N35
- Sentrol 1035-N, 1085, 1085-M, 1085-N
- Tane FM106